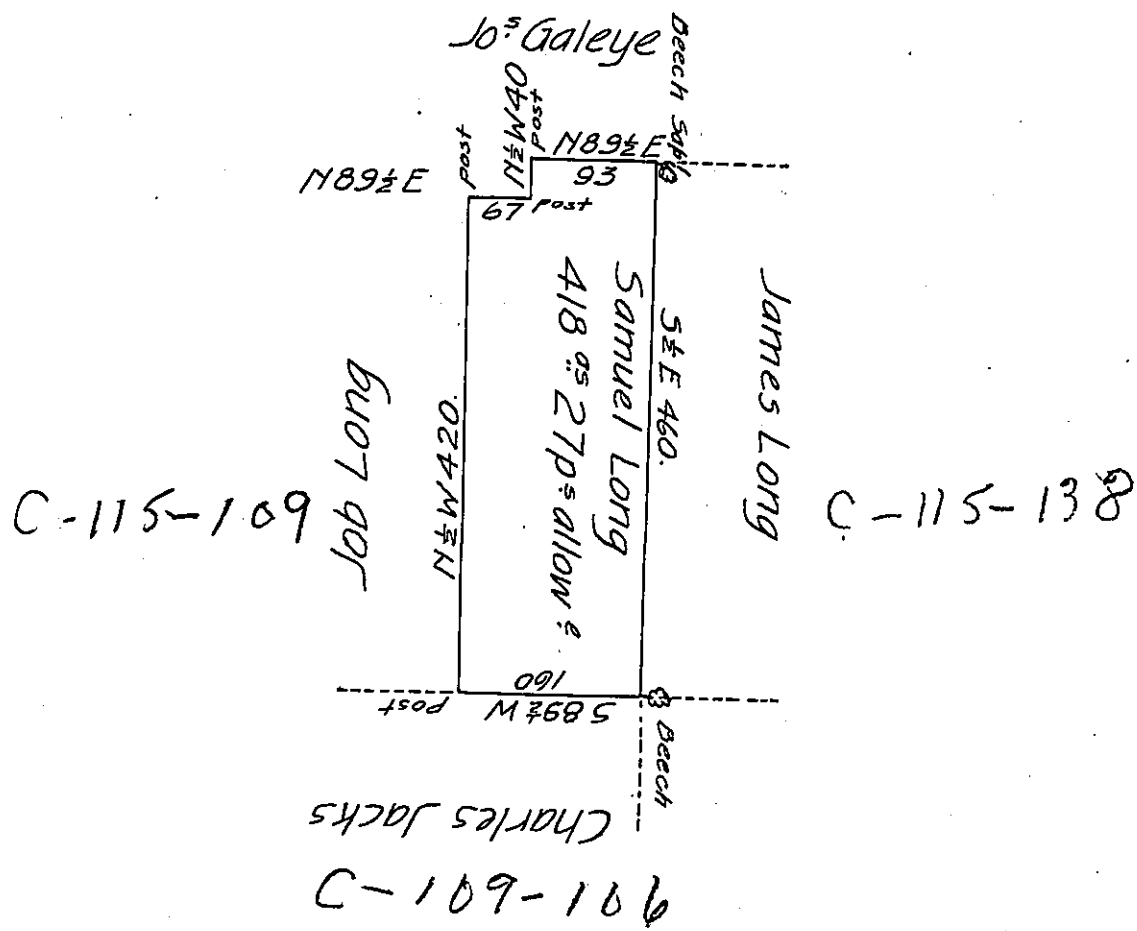


C-54-161



A Draught of a tract of Land called _____ Situate in the County of Luzerne, Adjoining James Long & others, surveyed the 17th day of Novem^r 1792 for Samuel Long in pursuance of a warrant bearing date the 3^d day of April 1792 Containing Four hundred Eighteen Acres & twenty seven perch^s & the usual allowance of Sixth Cent for roads &c

Ant^y Crothers D. S.

To Daniel Brodhead Esq^r }
 Surveyor General }

IN TESTIMONY that the above is a copy of the original remaining on file in the Department of Internal Affairs of Pennsylvania, made conformably to an Act of Assembly approved the 16th day of February, 1833, I have hereunto set my Hand and caused the Seal of said Department to be affixed at Harrisburg, this eighteenth day of August 1905.

Isaac P. Brown
 Secretary of Internal Affairs.